



a)



b)



c)

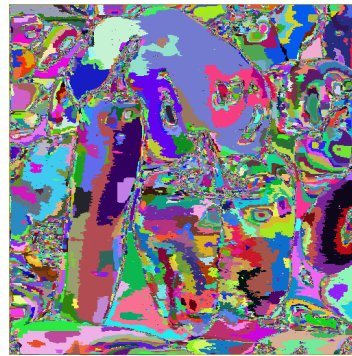


d)

Fig. 1. Segmentation results in successive stages: (a) original image, (b) after first scan (23090 regions), (c) after second scan (886 regions), (d) after third scan (48 regions). Parameter values: RGB space, $d=60$, $A=500$.

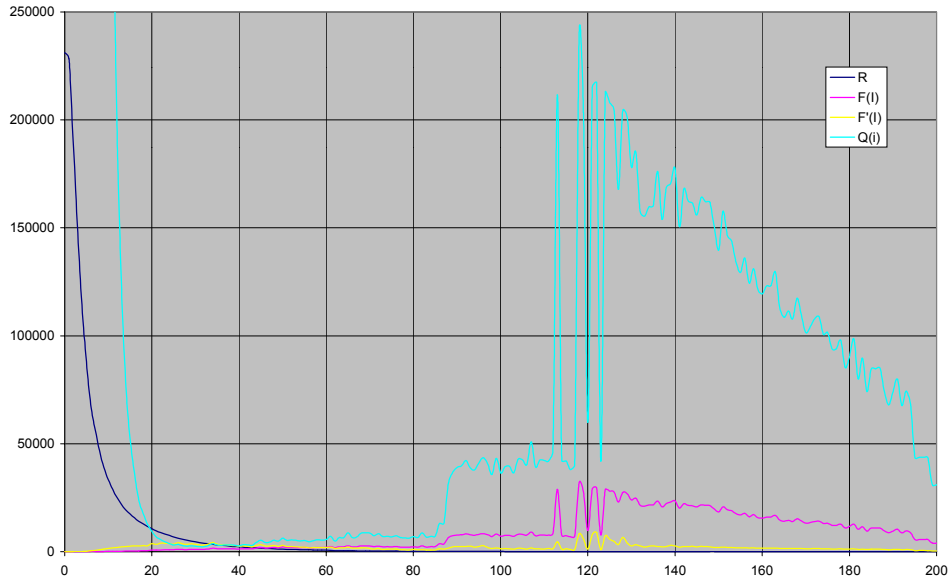


a)

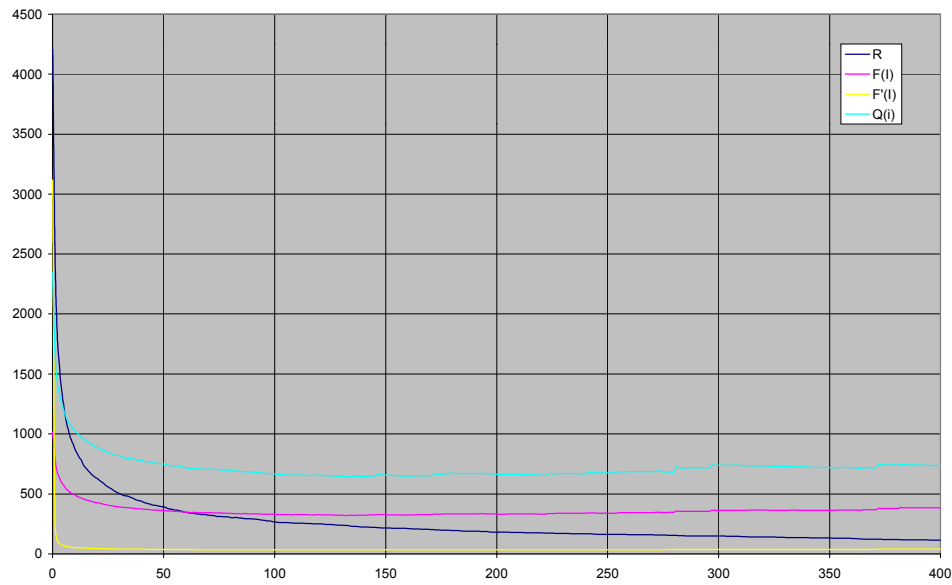


b)

Fig. 2. Using true-colours (a) and pseudo-colours (b) in the presentation of segmentation results



a)



b)

Fig. 3. Number of regions and values of evaluation functions versus tuning parameters d (a) and A (b). Results obtained for test image Peppers in RGB colour space